



ÜRETİMPARK

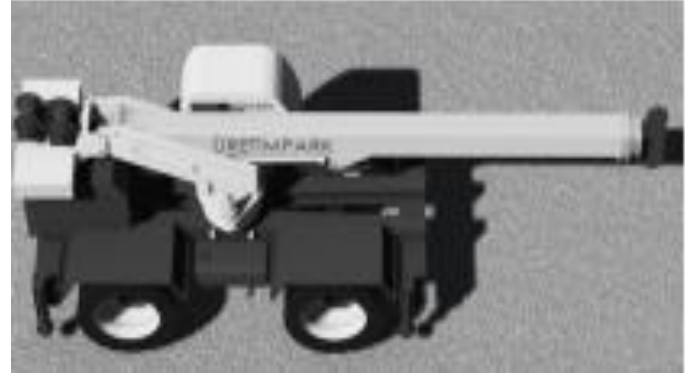
Lifting - Hoisting - Transporting



Crane Medium (20 To Smaller Than 50 Ton Capacity)

Make: ÜRETİMPARK

Model: HB90T3RT



ÜRETİMPARK MÜHENDİSLİK HİDROLİK MAKİNA SAN. VE TİC. ŞTİ

Sanayi Mh. Teknopark Bulvarı Teknopark İstanbul, Pendik-İstanbul/TURKEY

Tel: +905306006645, Fax: 90216999999

Email: info@uretimpark.com, www.uretimpark.com



Crane Medium (20 To Smaller Than 50 Ton Capacity)

Make: ÜRETİMPARK

Model: HB90T3RT

SPECIFICATION			
Make	ÜRETİMPARK	Truck	
Model	HB90T3RT	Make & Model	Make: Uretimpark, Model: HB90T3RT
Type	Rough Terrain	Year of Production	2025
Overall Dimension		Drive	4x4, RHD
Overall Length	11350 mm	Overall Dimension (LxHxW) in mm	L: 11350mmx H: 3700mmxW: 2600mm
Overall Width	2600 mm	Wheel base in mm	3700 mm
Overall Height	3700 mm	Wheel tread front	Wheel tread front 2250 mm
Lifting capacity	30 ton@ 3meters	Wheel tread rear	Wheel tread rear 2250 mm
Maximum lifting height (meters)	32 meter with telescopic, 42 m with jib boom	Rear axle load in kg	12500 kgs
Grade ability	25°	Front axle load in kg	12500 kgs
Turning radius	8 m	Vehicle kerb weight	25000 kgs
Ground clearance	250 mm	Gross vehicle weight	25000 kgs
Weight of Crane without vehicle	25000 kgs	Engine Specification	
Crane Specification		Make & Model	Make: IVECO, Model: FPT N67ENTX20.00
Boom type	Telescopic	Type	Four stroke diesel engine
Number of section of boom	4 section	Rated HP with rpm to be mentioned	175kW (238 HP) @ 2200 rpm
Fly jib length	7m+5m = 12m	Maximum torque with rpm to be mentioned	1020 Nm @ 1500 rpm
Boom derricking angel	0° to 82°	Number of Cylinder	6 cylinders
Boom extending time	75 sec	Bore and stroke in mm	Bore: 104 mm, Stroke: 132 mm
Boom length retracted	9,5 m	Type of fuel	Diesel
Boom length fully extended	32 meter	Cooling system	Water Cooled
Lifting speed with full load	10 m/min	Piston displacement	6,72 l
Outriggers		Clutch	
Type	Hydraulic telescopic with control and crane level indicator located in cab	For Truck	Multi plate Wet clutch
Number	4 (Four)	For Crane	Multi plate Wet clutch
Extended width	Maximum: 6300 mm Minimum: 2600 mm	Transmission	
Float size diameter	400 mm	Make & Model	Make: Omsi & Model: GNo2
Hook Capacity		No. of Gear/Type	6 Front, 1 rear
Main	30 ton	Speed	
Auxiliary	3 ton	Minimum on cross country (km/h)	12 km/h on cross country
Hoisting line speed		Traveling speed (km/h) on road	36 km/h on road
Main winch	130 m/min	Mobility at different terrain condition	On loose soil, mud, construction sites, rivers beds, the rough terrain condition
Auxiliary winch	130 m/min	Axles	
Boom swing/rotation angle	360°	Type of front axle and rear axle	Rigid and steering drive axle with input reducer
Boom steering speed	10 m/min	Steering system	Hydraulic power steering
Wire rope for hoisting		Suspension	
Dia	16 mm	Front & Rear	Oscilation hydraulic cylinder system
Length	150 m	Brake System	
Auxiliary Winch		Service brake & Parking Brake	Wheel: Pneumatic system drives hydraulic system to Disc brake.
Dia	16 mm	Auxiliary brake	Spring plate type brake with hydraulic and air booster disc brakes on all wheels
Length	120 m	Electrical System	
Self Recovery Winch	Compatible with Crane Load capacity	Volt	24 Volt
Hydraulic cooling system	Water Cooled	Battery (Volt & Ah)	2x12V & 120AH
Hoisting Motor	Bent axis hydraulic motor 50cc	Alternator (Volt & Amp)	24V & 50Amp
Slewing Motor	Hydraulic axial piston type	Starter (Volt & Kw)	24V & 5kW
Oil reservoir capacity	400 liters	Tyre size	
Pulling system	Hydraulic motor works with planetary gear box controlled independently by respective operating lever. Capacity is 40 kN.	No of tyre	4 main + 1 spare
Sling Rope	30 ton	Spare wheel with lifting facilities	Easy lifting and installation by winch
Out rigger pad	2 pair pad out riggers	Size & Ply rating	20,5*25-24 bias ply
Maximum pulling capacity		Type of Pattern	Non-directional, Ground Grip/ Cross country
Main	40 kN	Rim Size	17.00/2
Auxiliary	40 kN	Fuel tank capacity	250 liters